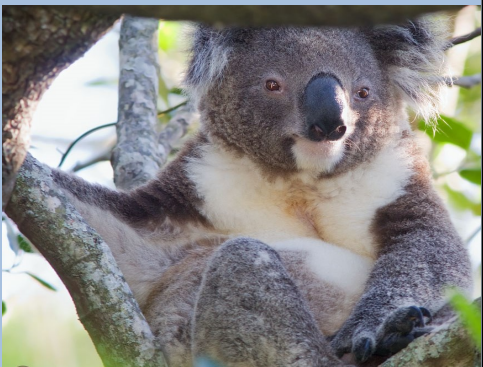
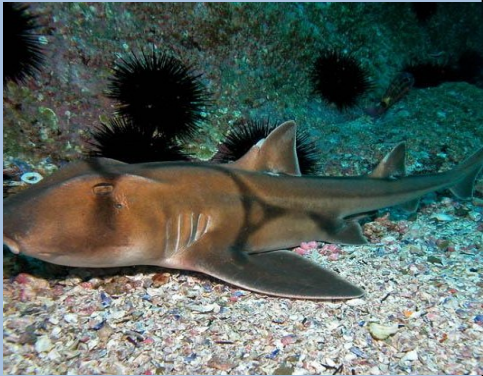


**WHAT'S HAPPENING  
IN ENVIRONMENTAL  
EDUCATION  
DURING  
JANUARY 2017**



**ROCKPOOL RAMBLES**

*Tuesday 27th December 2pm to 4pm*

*Boat Harbour*

Come and join OCCI Port Stephens in exploring the rockpools of Boat Harbour.

You will see some fascinating marine creatures and learn about some of their habits.

**Cost** - Free

**RSVP:** roger.reeder15@gmail.com - prior to 26th December to book your place.



**LET'S EXPLORE IRUKANDJI**

*Wednesday 4th January 10am to 2pm*

*Irukandji Shark and Ray Encounters, Marsh Rd,  
Bob's Farm*

Wetlands are a vital part of the Port Stephens marine eco-system. Come and join OCCI Port Stephens for walks and talks to learn more about this vital habitat that surround the Irukandji Centre.

There will also be interactive games and activities to explore the marine world.

**Cost** - Free

**RSVP:** roger.reeder15@gmail.com



**FAMILY DAY BY THE SEA**

*Saturday 7th January 10:30pm—2.30pm*

*Barry Park, Fingal Bay*

OCCI Port Stephens will be hosting a Family Day by the Sea. Take part in the 'Whales and Whalers' game or at the colouring-in table. A touch table of marine animals will be there, too, and share in a sausage sizzle for lunch. Come along and learn more about our marine creatures. Everybody is welcome.

**Cost** - Free **RSVP:** roger.reeder15@gmail.com



**TOMAREE HEADLAND SPOOKY TOUR**

*Tuesday 10th January 6pm to 8pm*

*Tomaree Headland*

Come along to this sunset event in Tomaree National Park and you might well feel a shiver running up your spine. An NPWS Discovery ranger will guide you on a spooky dusk tour around the bay and into the World War II gun emplacements. Learn about this area's role during World War II.

Experience its haunting ambience. Returning by dark, we'll listen for the eerie sounds of the bush. If we're lucky, we might spot a nocturnal animal or two. Suitable for adults and children 8 years and over. Not suitable for children under 8 years. Children 16 years and under must be accompanied by an adult.

**Cost** - \$10 per person

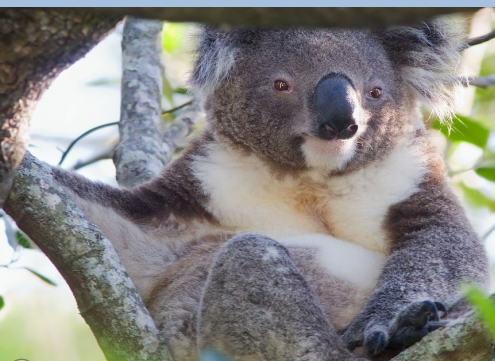
**RSVP :** www.portstephens.nsw.gov.au/play/events/event- calendar or phone 4980 0255

**BOOKINGS ESSENTIAL**

<http://www.portstephens.nsw.gov.au/play/events/event-calendar>

Email: [enviroevents@portstephens.nsw.gov.au](mailto:enviroevents@portstephens.nsw.gov.au) or Phone: 4980 0255

**WHAT'S HAPPENING  
IN ENVIRONMENTAL  
EDUCATION  
DURING  
JANUARY 2017**



**SHARKS, SHARKS, SHARKS**

*Wednesday 11th January 10am to 12pm*

*Tomaree Library and Community Centre*

Discover how to identify common shark species, examine 10-20 million year old teeth, learn about the importance of sharks and how we can protect them in the future.

Watch a DVD on sharks.

Suitable for all ages.

**Cost** - Free

**RSVP:** [www.portstephens.nsw.gov.au/play/events/event-calendar](http://www.portstephens.nsw.gov.au/play/events/event-calendar) or phone 4980 0255

**KOALA CAPERS**

*Thursday 12th January 4m to 6pm*

*One Mile Beach*

Koalas are definitely an attraction for the Port Stephens area. An NPWS Discovery ranger will tell you about the antics of these cuddly little creatures. Discover the truth about their personal habits. Suitable for all ages.

**Cost** - \$5 per person

**RSVP:** [www.portstephens.nsw.gov.au/play/events/event-calendar](http://www.portstephens.nsw.gov.au/play/events/event-calendar) or phone 4980 0255

**BUGS, BEAUTIFUL BUGS**

*Friday 13th January 10:00am to 11.00pm*

*Ngioka Horticultural Centre*

This interactive workshop is designed to inspire a love for these tiny yet vital players in the planet's eco-systems. Learn the many ways that insects survive in a hostile world and how they contribute to our daily lives.

Walk around the Nelson Bay Native Flora Garden and Ngioka Centre and see what fascinating bugs we can find.

Suitable for 6 years to adult

**Cost** - \$5 per person

**RSVP:** [www.portstephens.nsw.gov.au/play/events/event-calendar](http://www.portstephens.nsw.gov.au/play/events/event-calendar) or phone 4980 0255

**NATURE MANDALA**

*Friday 20th January 10am to 11am*

*Ngioka Horticultural Centre*

Come and collect materials from nature's art box and by using your imagination, we will create designs that tell a story.

Suitable for 6 years to adult

**Cost** - \$10 per person

**RSVP:** [www.portstephens.nsw.gov.au/play/events/event-calendar](http://www.portstephens.nsw.gov.au/play/events/event-calendar) or phone 4980 0255

**BOOKINGS ESSENTIAL**

[www.portstephens.nsw.gov.au/play/events/event-calendar](http://www.portstephens.nsw.gov.au/play/events/event-calendar)

Email: [enviroevents@portstephens.nsw.gov.au](mailto:enviroevents@portstephens.nsw.gov.au) or **Phone:** 4980 0255